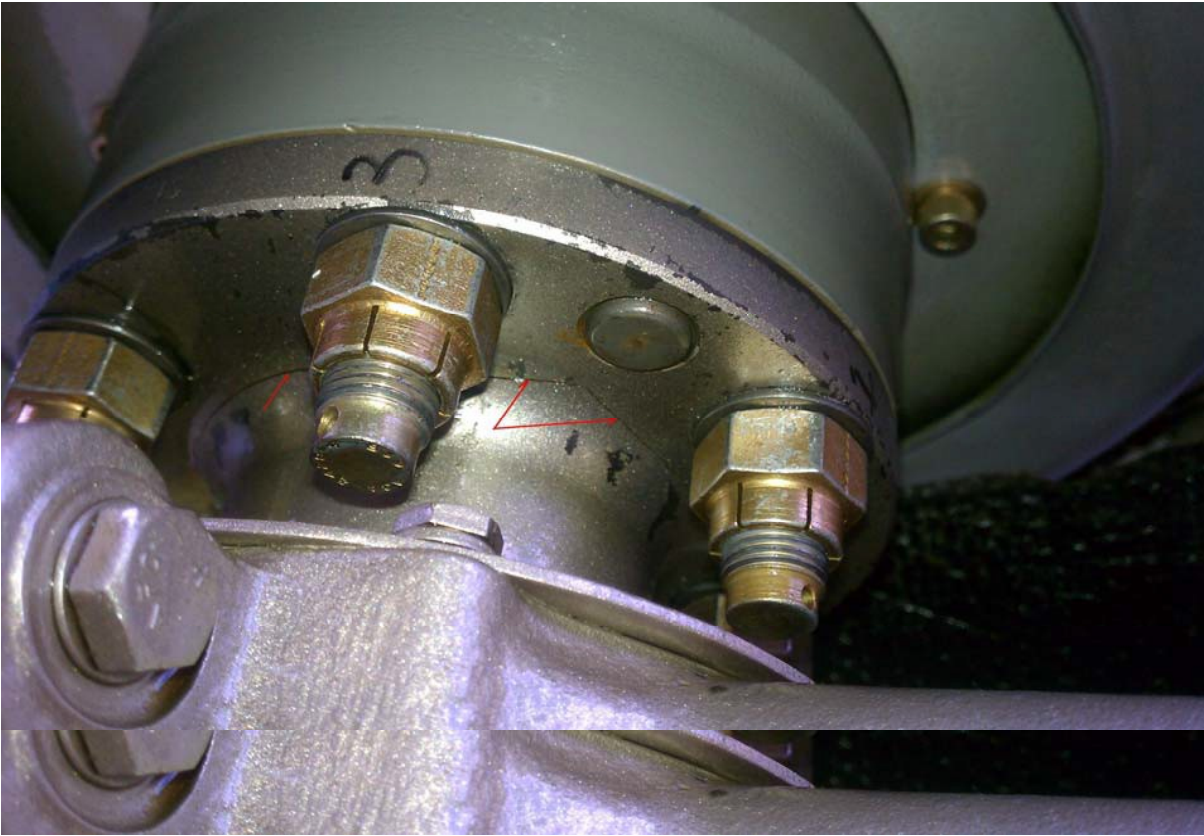


## Continental IO520C, Cracked Crankshaft, ATA 8520

"The crankshaft cracked in the propeller flange at the radius," writes a technician. "The crack (*appeared*) in a 'V' shape. On one side the (*crack*) line was about four inches long, and the other about three inches." (*Crankshaft P/N: 649859.*)



Part Total Time: 4,531.0 hours